

SALTWORKS



Theatre Company

"I believe this has to be the best assembly I have seen in all my 22 years as an educator. Bravo to Saltworks for an amazing performance on this issue."

Holidaysburg Area Senior High

Start the conversation! Bring a Saltworks show to your school and watch the climate change!

**School
Assemblies
2017-18**

"The performance felt very real to watch which is important since middle school students struggle when something seems fake and childish. We really appreciated the talk afterward and wish we had more time!"

Winchester Thurston

"I had students at every grade level comment to me that they enjoyed the play. Our students laughed at appropriate times and seemed engaged for the entire time. Student questions were thoughtfully answered. The actors were high energy and had great rapport with the various age groups."

Beechwood K-5

Believing that students can be changed through the power of live theater

Phone 412-621-6150 ext. 201

Or email Norma

nalrutz@saltworks.org

for more details and to schedule your assembly!

Our educational dramas are funded in part by the following organizations:

Birmingham Foundation

Eden Hall Foundation

Frick Fund of the Buhl

Foundation

The Grable Foundation

Jefferson Regional Foundation

Howard and Nell E. Miller Foundation

PNC Charitable Foundation

Rossin Foundation

Scaife Family Foundation



the way out



Grades 8-12

Cycle of Addiction

Kayla's story doesn't end the way she expected it to. She went from a promising young athlete to one of the many young adults lost to the heroin epidemic. As she takes the audience backwards through her story, they see the evolution of an addict as well as all of the places where things could have gone differently.

Plays are performed by professional actors and run 45-50 minutes in length. Each performance is followed by 10-15 minute Q & A which invites students to explore the issues further.

Educator curriculum guides, containing pre- and post- show classroom exercises, are provided free of charge to prepare students for the performance and stimulate communication around the issues.

Please contact nalrutz@saltworks.org for prices.

Accommodations may be necessary for overnight stays.

More information, including video clips, play synopses and actor biographies:

WWW.
saltworks.
org



Follow us on Instagram, Twitter and Facebook!

[saltworkstheatrecompany](http://saltworkstheatrecompany.com)

ALEX REWRITES THE WRONGS



Grades K-5

Responsibility, Respect

A new show for elementary students, *Alex Rewrites The Wrongs*, will encourage kids to be a leader by doing the right thing, even when no one is looking. Inspired by Sean Covey's book, *7 Habits of Happy Kids*, this interactive play will inspire children to be proactive in order to see change in their lives and to be a leader in starting that change. This play will inspire students to live according to principles such as responsibility, compromise, teamwork and respect.

Off 'Script



Grades 8-12

Prescription Drug Abuse

The misuse of prescription drugs is often overlooked and unnoticed for too long. In *Off 'Script*, three students share their stories of addiction to prescription drugs, the consequences of their actions, and their journey to hope and healing.



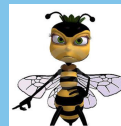
CYBER SLAM

Grades 6-12

Cyber Bullying, Cyber Danger, Internet Predators

Audiences will discover how a seemingly innocent exchange on the internet becomes a tangled web of threats, put-downs, and harassment. The long-term danger of social network posting is exposed as well as predators' ploys.

queen bee



Grades K-5

Targets, Triggers

Research shows that girls participate in bullying as much as boys. This play, which represents both, shows students effective ways to handle conflict. Students will find out the consequences of words that sting as they learn to first ignore the bully, then tell an adult and help anyone being bullied.

I AM THE BROTHER OF

Dragons

Grades 6-12

Substance Abuse, Peer Pressure

Sonny is facing the "dragon" of drug and alcohol abuse and the whole family suffers. This intense drama, based on real-life stories, shatters the walls of denial surrounding this disease and illuminates the path to recovery. This classic play is updated annually to remain pertinent to the youth culture.